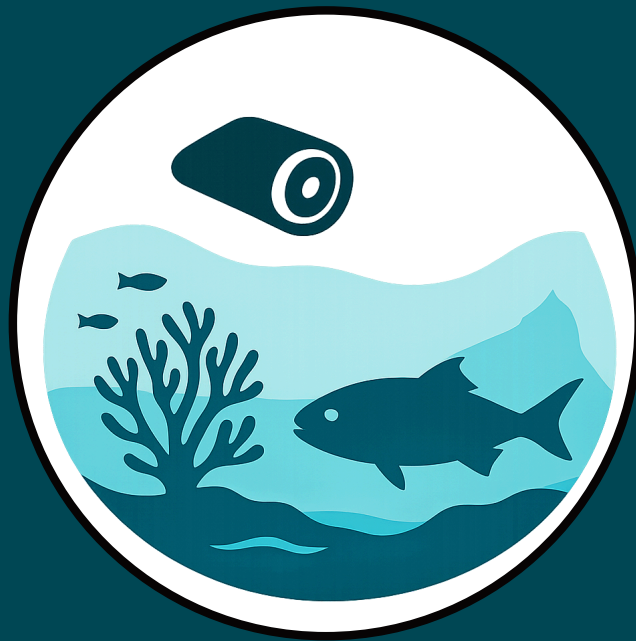


# Marine Imaging Workshop 2026

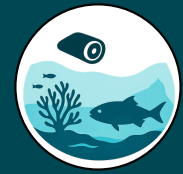


Advancing Global Ocean Observation

May 19–21, 2026  
Gibraltar

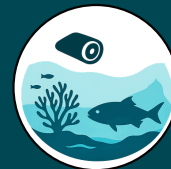


# Poster Talks - Tuesday



Poster	Name	Session	Title
1	<b>Lonny Lundsten</b>	Image capture & processing for marine research	Real-time machine learning visualization and data logging during deep-sea ROV dives
2	<b>Katleen Robert</b>		Adding images to underwater laser scans of cold-water coral reefs for high resolution coloured 3D reconstructions.
3	<b>Benedetta Zoe Donelli</b>		A self-scaling method for laser-independent colony size measurement of <i>Madrepora oculata</i> (Linnaeus, 1758) from ROV imagery
4	<b>Ahmet Faruk Semerci</b>		Autonomous Reef Survey and Species Classification using RGB and Multispectral Imaging with Deep Learning
5	<b>Jennifer Durden</b>		Inter- and intraobserver biases in biodiversity monitoring from seabed photographs, and their reduction with independent classification review
6	<b>Gavin Donohue</b>		Broad-Spectrum Xenon Strobe Lighting for Improved Benthic Still-Image Colour Fidelity
7	<b>Kelsey Archer Barnhill</b>		AUV-Based Visual Habitat Mapping for Standardized Marine Imaging
8	<b>Cameron Trotter</b>	Data-driven ocean science: artificial intelligence in marine science	Automated Detection of Antarctic Benthic Organisms in High-Resolution In-Situ Imagery to Aid Biodiversity Monitoring
9	<b>Filippo Varini</b>		The Community Fish Detector: A Collaborative Approach to Building a Generalizable Fish Detection Model for Marine Imaging
10	<b>Raphaella Neves</b>		iSEA: Intelligent Seafloor & Animal Image Annotator
11	<b>Eleanor Cross</b>		Underwater Organism Tracking in Video Footage through use of Computer Vision and Deep learning
12	<b>Judith Fischer</b>		BenthicAI: Seeing What Burrows — Image-Based Detection of Elusive Benthic Fauna
13	<b>Nancy Jacobsen Stout</b>		Building a machine learning-aided video annotation workflow in concert with MBARI's video annotation and reference systems (VARs)
14	<b>Heather Doig</b>		Training a marine organism detector with point annotation survey data
15	<b>Esther Marçayata-Vaca</b>		Megalodon object detection model applied with BIIGLE annotation software for biodiversity assessment of CWC reefs
16	<b>John Halpin</b>		NorthSea3D – A tool for biovolume/biomass measurements on offshore structures.
17	<b>Scott Brown</b>		A Hierarchical Detection Model and Applications to Fisheries Science.

# Poster Talks- Wednesday



Poster	Name	Session	Title
18	<b>Kaarel Kaspar Räs</b>	Ocean data management	Deploying Benthic Detection Models on Live Video Feeds using Standard Production Hardware
19	<b>Giovanna Sainz</b>		Integrating machine learning (ML) tools into MBARI's existing VARS video analysis workflow
20	<b>Giulia La Bianca</b>		Standardising Megafauna Observations in the Abyssal and Hadal Zones: Integrating Submersible Video Data with the BIIGLE Annotation Framework
21	<b>Judith Fischer</b>		From Pixel to Knowledge
22	<b>Beatriz Naranjo-Elizondo</b>		Accelerating Deep-Sea Image Analysis Through Regional Collaboration in the Eastern Tropical Pacific
23	<b>Jennifer Durden</b>		A standard format for biological annotations in marine images to make them FAIR
24	<b>Fergal McGrath</b>		SeaRover Synthesis – Website Prototype Development For ROV Imagery and Biodiversity Data
25	<b>Kevin Barnard</b>		Enabling visual similarity search in VARS
26	<b>João Balsa</b>		Benthic Clicker: A versatile manual annotation tool for cost-effective deep-sea imaging workflows
27	<b>Tiffany Cunanan</b>		From Pixels to Products: Standardized Workflows for Deep-Sea Benthic Imagery Annotation by the Deep-Sea Animal Research Center
28	<b>Henrique Mourato</b>	Advancing biology through imaging: marine applications	A Dual-Platform Optical Survey Strategy for High-Resolution VME Detection
29	<b>Carolin Zofall</b>		Marine imaging for non-destructive monitoring of corals of opportunity in temperate coral restoration: <i>Astroides calycularis</i> as a model species
30	<b>Filippo Pandolfi</b>		Ecology and structural complexity analysis of <i>Isidella elongata</i> using ROV imagery
31	<b>Craig Fergusson</b>		The EMFAF Irish Shelf & Upper Slope Habitat Assessment (SeaShelf) – Mapping and Tools To Inform Policy
32	<b>Elizabeth Hasan</b>		Image-derived fish abundance and biodiversity distributions in New Caledonia
33	<b>Emmeline Broad</b>		Use of Benthic Imagery to Validate Regional Model Projections of Temperate Mesophotic Ecosystems in Atlantic Canada
34	<b>Gerrit Meiners</b>		Mapping Deep-Sea Habitat Complexity at the Centimetre Scale: A Large-Area Photogrammetric Study from the Southeast Indian Ridge
35	<b>Kea Witting</b>		Artificial Intelligence Annotations Capture Ecological Patterns in Sponge-Dominated Temperate Mesophotic Ecosystems
36	<b>Avery Rose</b>		Assessing the spatial ecology of sea pens, <i>Veretillum cynomorium</i> in British Gibraltar Territorial Waters (BGTW)
37	<b>Kristopher Carrigan</b>		The use of marine imagery in monitoring the health of UK MPAs
38	<b>Nils Piechaud</b>		CV for mapping the deep-sea in MAREANO: the challenges of gathering a large and high-quality dataset